



**ZEDEX<sup>®</sup>** in  
Tribological Polymer Solutions

**Food Industry**



**HIGH PERFORMANCE PLASTIC SOLUTIONS**

EN 2.0

**ZEDEX® in action**

# ZEDEX® in Food Industry



Plain bearing bushes of **ZX-100K** in an equipment for the food industry



Slideways of **ZX-100K** in food processing and packaging machinery



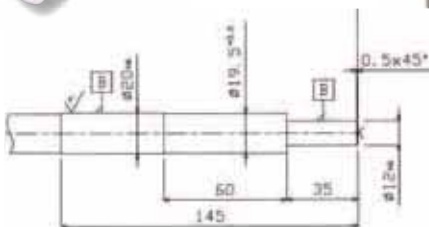
Components of **ZX-100K** for dosing and forming bread rolls dough



The plain bearing bushes of **ZX-100K** are used for the rotating device of the dough bowl in dough mixers. Thanks to its excellent sliding properties, a smoother running and stable operation of the entire assembly is ensured. Additionally, thanks to its lower wear values, the working life, in comparison to the previously used plastic, was significantly increased.



Piston of **ZX-100K** allow the exact dosage of bread rolls dough. The dough is gently pressed out by the piston through the dough trays.



In plants for industrial bakeries dough rollers of **ZX-530** with different diameters are used. The shell of **ZX-530** is here mounted on a stainless steel shaft. **ZX-530** is used because of its high resistance to sourdough and aggressive cleaning agents.



**ZX-100K** is used as outer roller and guide rod in a dough divider in a knitting machine. The dough is forced through a funnel into the drum opening. The guide rod pushes the dough through the recesses of the rotating drum, in which the dough is preformed. The dough in excess is conveyed back by a scraper. **ZX-100K** is used for its anti-adhesive effect and its approval for applications with direct food contact.





## ZEDEX® in action

Scrapers of  
**ZX-100K** and  
**Inkulen 1000**



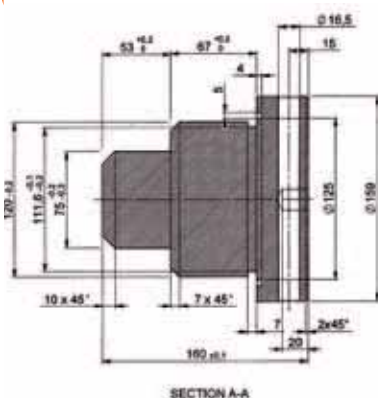
Plain sliding  
bushes of  
**ZX-100K** in  
refrigeration  
plant



Mouldings of  
**ZX-100K** in  
dough  
machines



**ZX-100K** moulding roller for meat pies. So far, shapes of stainless steel were used. Through the usage of **ZX-100K** the working life has been significantly increased and the costs have been reduced. The very good anti-adhesion properties of **ZX-100K** facilitates the demoulding of the finished moulded dumplings.



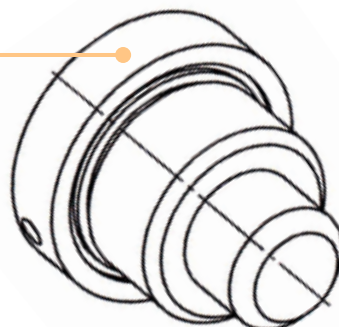
**ZX-100K** is used as sliding guide for the lifting mechanism of a meat processing machine.



**Inkulen 1000** and **ZX-100K** in meat processing machinery. Thanks to the low friction and anti-adhesion properties of **Inkulen 1000** (**ZX-100K** if the meat is harder), it is used as scraper for shafts mounted in meat processing machinery.

**ZX-100K** in meat grinders.

In meat grinders plain bearing bushes of **ZX-100K** are used for a shaft diameter of 75mm. The bushing is mounted into the machine housing with a trapezoidal thread. The use of **ZX-100K** in this machine has led to undisputed advantages such as quiet operation and low wear values, i.e. longer working life.





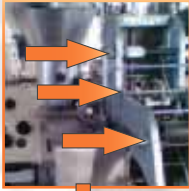
## ZEDEX® in action



Piston of **ZX-100K** in a filling machine for PET bottles



Guide rails of **ZX-100K** in bottling plants as substitute for PE



In packaging machinery for cheese, cottage cheese and butter various bushings of **ZX-100K** are used



Bushings of **ZX-100K** as substitute for bronze in packaging machinery for catering



**ZX-530** and **ZX-324V2HT-Coat** in bottling plants. Gears of **ZX-530** are used in devices for looking crown cap in bottling plants. They are subjected both rotary and linear moves. By the coating of the steel shaft with **ZX-324V2HT-Coat** the friction and wear were improved significantly.



**ZX-530EL3AG2** in bottling plants  
Sliding guides of the antimicrobial material **ZX-530EL3AG2** are used as support for the shaft in bottling plants and replaced the old guidance made of hard fabric with a PTFE-carbon fibre overlay. The increased hygiene requirements were fulfilled, an adequate capacity of load was reached and the friction and wear behaviour were optimized.



**ZX-100K** in ice machines  
Various bushings of **ZX-100K** are used in portioning devices of ice machines. Both in some components of the pump, as well as in the opening valves of the portioning, the previous material PTFE compound was replaced through **ZX-100K**. Thanks to the lower wear, the working life of the components has been increased and the costs were reduced.



Bearing shells of **ZX-530** as support of a screw conveyor for mashing. The material has to withstand a long-term temperature of 60°C and a short-term steam temperature of 150°C. **ZX-530** fulfils these requirement and also has got the necessary resistance against the acidic medium (pH 3,5 - 4,5). The prescribed conformity in accordance with Regulation 1935/2004/EC is fulfilled with **ZX-530**.



**Wolf Kunststoff-Gleitlager GmbH**  
Heisenbergstr. 63-65  
50169 Kerpen-Türnich  
Phone: +49 2237 9749-0  
Fax: +49 2237 9749-20  
E-Mail: [info@zedex.de](mailto:info@zedex.de)  
Internet: [www.zedex.de](http://www.zedex.de)

- Plastic wear resistance parts
- Plastic machine elements
- Customer service
- Materials development
- Components design
- Prototypes production
- Large-scale manufacturing

Handed by: